



CARDINAL NEWMAN  
HIGH SCHOOL

**Cardinal Newman High School**  
**2008-2009**  
**Annual Report**

# *Our Mission*

The Mission of Cardinal Newman High School is to educate the whole person: spirit, mind, and body, and to help all students develop their God-given talents according to the Gospel values of Jesus Christ. In fulfilling this mission, we provide:

- **A Catholic-Christian Community**

We provide a Catholic-Christian Community in which students learn self-fulfillment through Catholic teachings, retreats, liturgies, and spiritual experiences.

- **A well-rounded curriculum and program**

We work hard to provide academic, religious, extracurricular, athletic, and community service programs in order to form individuals who accept leadership, are academically inquisitive, spiritually alert, and physically sound.

- **Individualized attention**

We dedicate ourselves to discover each student's unique talents and to prepare each student intellectually to make mature decisions about his or her future.

- **A dedicated and supportive faculty**

We pledge to provide a faculty who understands the diverse needs of each student and who works with each student in a caring and supportive environment.

- **High academic standard**

We commit ourselves to a high academic standard in order to motivate each of our students to do his or her very best while accepting the necessary self-discipline which the quest for excellence requires.

## *Letter from President*

Dear Family and Friends of Cardinal  
Newman High School,



With the start of each new school year comes the excitement of new beginnings. This year marks our forty-ninth year as we eagerly anticipate our Golden Anniversary in 2010-2011. We ended the last school year with all 203 graduating seniors planning to continue their education at some of the finest colleges, universities and institutes throughout Florida and the United States.

We are pleased to present you with the Annual Report for the 2008-2009 school year. This is the first Annual Report ever produced at Cardinal Newman High School. Preparation of this report reminds us that Cardinal Newman is a community of many people who volunteer, donate, and work toward one goal - educational excellence through the Gospel message. Your support and encouragement strengthens the resolve of our students, families, and staff in our quest for excellence.

In reviewing this report, you will see that your philanthropic support of Cardinal Newman is essential to our success in continuing our mission to educate the whole person - spirit, mind, and body according to the Gospel values of Jesus Christ. The school receives no subsidies from the diocese or local parishes. As a result, we depend on the generosity of donors to supplement revenues generated from tuition and fees. Cardinal Newman has been able to fulfill our vision of excellence because of your support. We thank you for giving your time, talent, and treasure to ensure our continued response to the Gospel message. We will continue to remember our students, parents, alumni, and benefactors at our school liturgies.

We look forward to your continued support during the 2009-2010 school year. May God continue to bestow His blessings on the Cardinal Newman Family.

Sincerely in Christ,

A handwritten signature in black ink that reads "David W. Carr". The signature is fluid and cursive, with a large, sweeping initial "D".

Rev. David W. Carr  
President

# *Principal*

Dear Members of the Cardinal Newman Family,

Since 1961, Cardinal Newman has offered a challenging curriculum that fulfills our mission. Because of our holistic approach to education, our thousands of graduates have excelled in all aspects of life. Today, Cardinal Newman High School is at an exciting place in its history. As we approach our 50th anniversary, we are embarking on our next phase of development. Our strategic plan, formulated in the 2008-2009 school year, is a concrete blueprint for growth and future success. The plan takes us forward with well-defined goals, strategies, and initiatives.



Our academic program includes courses in Advanced Placement and a fully authorized International Baccalaureate (IB) program. A Learning Strategies program assists underclass students who need additional English, Math, and study skills. Our students are challenged not only in the classroom, however! Over 26 athletic teams, numerous activities, three National Honor Societies, and required community-service programs offer our students a multitude of opportunities for personal growth. Finally, our Campus Ministry and Religion departments offer a solid Catholic education and provide a moral foundation for an ever-challenging world.

Any success this school and our students enjoy would not be possible without the extraordinary support, as evidenced in the following pages, from the Cardinal Newman Family. We are grateful for the support of our parents, alumni, and all benefactors of the school. It is through such support that Cardinal Newman High School is a “community of faith, with a commitment to excellence!”

Sincerely yours in Christ,

A handwritten signature in black ink that reads "John F. Clarke". The signature is fluid and cursive, with a large loop at the beginning of the name.

John F. Clarke  
Principal

## Advisory Board

As an alumnus of Cardinal Newman High School and a parent of three graduates, I have experienced firsthand the tremendous impact our school has on each and every student who passes through its doors. The 2008 – 2009 school year was no exception. It is with excitement that we share with you in the pages that follow the many successes witnessed here at Cardinal Newman High School.



Undoubtedly, you - Cardinal Newman parents, grandparents, alumni and friends - have made the school what it is today. Your gifts of time, talent and treasure have enabled Cardinal Newman to remain the leading Catholic high school in Palm Beach County. For that, we remain eternally grateful. Due to the economic times of today we need your continued financial commitment now more than ever. On behalf of the Board of Advisors, thank you for your steadfast support.

Sincerely,

A handwritten signature in black ink, appearing to read 'Gerard Arsenault'.

Gerard Arsenault  
Advisory Board Chair

## Advisory Board

Mr. Gerard Arsenault  
Most Rev. Gerald Barbarito  
Mr. Tom Carney  
Rev. David W. Carr  
Mr. John Clarke  
Dr. Timothy Coffield  
Mrs. Rita Craig  
Sr. Joan Dawson, O.S.F.  
Ms. Theresa A. Fretterd  
Mrs. Carol Garvy  
Mrs. Joan Gomez  
Ms. Marikay Gomez  
Mr. Patrick Koenig  
Rev. James Murtagh

Mr. Brian O'Connell  
Dr. Gerald O'Connor  
Mr. Tom O'Hara  
Mrs. Louise O'Neill  
Mr. Greg Quattlebaum  
Mrs. Julie Quattlebaum  
Mr. Richard Rendina  
Mr. Robert Reveley  
Mr. Brooks Ricca  
Mrs. Suzanne Sandelier  
Mrs. Francine Stenz  
Ms. Susan Stephenson  
Mr. Bruce Zimet

## *Office of Institutional Advancement*



The 2008–2009 school year sparked a new direction for the Development efforts at Cardinal Newman High School. An Office of Institutional Advancement was established to coordinate all aspects of giving to the school, its facilities, and its programs. Fundraising, Admissions, Alumni Relations, and Public Relations and Marketing will all be directed under the umbrella of Institutional Advancement.

Fundraising activities this past year included the Annual Fund, Newman Night and our annual golf event, The Crusader Alumni Classic. Funds raised went directly to the CNHS operating budget and scholarship fund to help bridge the gap between tuition and the actual cost of educating each child. We thank the many chairs and committee members that helped make these fundraisers a success. We also would like to thank our Public Relations and Marketing Committee who worked tirelessly to promote Cardinal Newman’s accomplishments throughout the year.

As we move forward to the coming year, excitement will continue to build as we begin to finalize plans for our capital campaign to renovate our campus. We invite you to stop by campus to see the “prototype” classroom housed in the North building. It is a glimpse of the exciting future of our school. Our Development Committee has never been busier and we look forward to an exciting year to come.

Sincerely,

A handwritten signature in black ink that reads "Timothy S. Coffield". The signature is fluid and cursive, with the first name being the most prominent.

Dr. Timothy Coffield  
Development Committee Chair

# Major Fundraisers

## Annual Giving Appeal

The 2008-2009 appeal, chaired by Francine and Brian Stenz with the help of energized classroom representatives, raised over \$63,000. Fifty Newman students participated in the first ever phone-a-thon to raise funds to support the Newman operating budget.

## 2008 Alumni Classic Golf Tournament

Our 2008 Crusader Classic Alumni Golf Tournament was held in October with over 70 golfers in participation. Over \$11,000 was raised for our Alumni Scholarship program.

## 2009 Newman Night

Through the generosity of our families, alumni, Crusader Community and local businesses, over \$170,000 was raised in support of our school at the 2009 Newman Night. A sincere “thank you” to our Honorary Chairpersons: Robert and Carol Garvy and our Auction Co-Chairs, Connie Allen and Cathy Dorsey and all of our Auction Committee. We hope to see you at Newman Night 2010 to be hosted on March 20 at the Kravis Center.

*“Working the phone-a-thon was really fun. I raised money for the school’s Annual Giving Appeal and found interacting with parents and alumni was interesting and rewarding.”*

Danielle Visone, Class of 2010



## Alumni News

To my Fellow Crusaders,

This past year has been busy in the realm of alumni relations. As a Newman graduate, I am honored and overjoyed to be working here at my Alma Mater. Sister Anne Richard retired in June after 48 years of service to Cardinal Newman. I look forward to continuing the traditions which she started. The classes of '64, '69, '77, '78, '98 and '99 all celebrated reunions throughout the year. Hats off to the class of '64, most of whom returned to Cardinal Newman's campus for the first time in 45 years!



Cardinal Newman High School's Alumni Association continues to grow. In fact, the class of 2010 will be the first class at Cardinal Newman to be officially inducted into the Alumni Association during their commencement ceremony. If you are an alumnus who is enthusiastic about the growth and development of Cardinal Newman, please consider actively participating by volunteering for alumni events or serving on our Alumni Association Board. With your involvement Cardinal Newman can rise to new heights.

We look to the future with excitement and hope you will join us for the First Annual Alumni Homecoming Weekend during our school's 50th Anniversary to be celebrated next year. All alumni will be invited to return to campus and connect with their former classmates. In the

meantime, feel free to stop by and visit me at the former convent which was recently renamed the Sister Anne Richard Alumni Center.

Please drop me an email with your contact information. We want to make sure you receive notices of events and reunions, publications and other alumni news. I look forward to hearing from you.

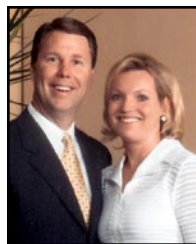
Sincerely,

A handwritten signature in cursive script that reads "Jessica M. Willey".

Jessica M. Willey '04  
Alumni Coordinator  
[jwilley@cardinalnewman.com](mailto:jwilley@cardinalnewman.com)

## *Home and School Association*

The Home and School Association organizes various service and social programs for the parents of students. The purpose of our association is to build a community of parents who are connected to the school and the lives of their children. This Association is one of the opportunities at Cardinal Newman High School in which parents become involved with their children's activities, while providing an invaluable service to the School. The Home and School Association supports the CNHS community through the following events or services:



Greg '80 and Julie '85  
Quattlebaum

- Welcome New Families Pizza Party
- Catholic School Week Events
- Sports Banquets
- Concession Stand
- Faculty Appreciation Lunches
- Provide Volunteer Basis for Events

All parents are automatically recognized as members of the Home and School Association. The Cardinal Newman Home and School Association enjoys tremendous success because we are blessed with families that share a "Willingness to Serve." We would especially like to thank those of you who have served on the Home and School Association's various committees.

If you are looking for a way to participate in your child's high school experience, consider volunteering your time to one of our many events.

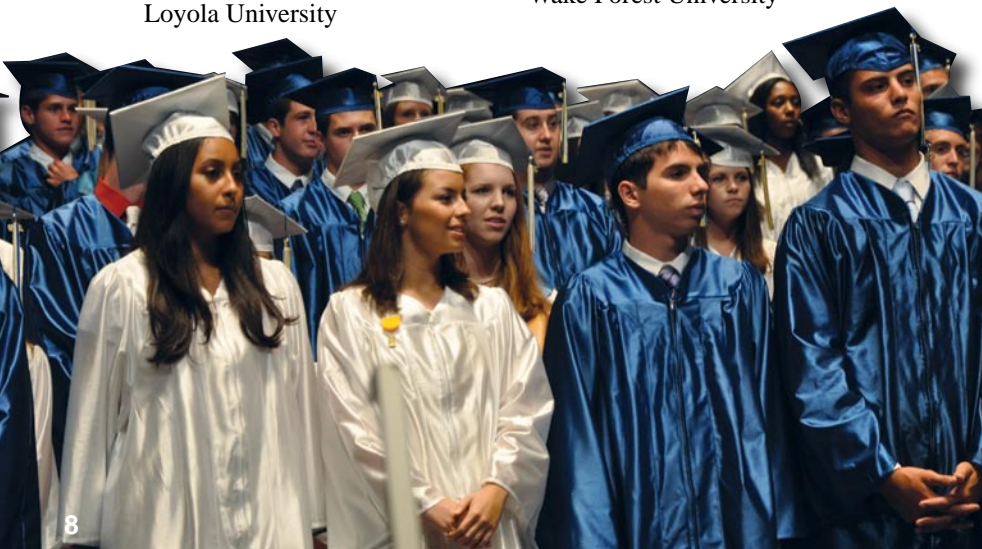
Go Crusaders!



# Colleges Students Currently Attend

A sampling of colleges and universities at which Cardinal Newman graduates are currently attending:

American University	Michigan State University
Auburn University	New York University
Boston College	Penn State
Boston University	Purdue University
Brown University	Rutgers College
Catholic University of America	Texas A&M
Clemson University	The Harriet L. Wilkes Honors College at Florida Atlantic University
Colgate University	Tulane University
College of William & Mary	United States Military Academy
College of the Holy Cross	University of Alabama
Columbia University	University of British Columbia
DePaul University	University of Colorado at Boulder
Duquesne University	University of Central Florida
Florida Atlantic University	University of Florida
Florida Gulf Coast University	University of North Carolina Chapel Hill
Florida International University	University of South Carolina
Florida State University	University of North Florida
Fordham University	University of Massachusetts
George Washington University	University of Miami
Georgetown University	University of Michigan
Harvard Law School	University of Notre Dame
Hofstra University	University of Virginia
John Hopkins University	Wake Forest University
Louisiana State University	
Loyola University	



# Senior Recognition

## Top Ten Graduates

- |                                     |                     |
|-------------------------------------|---------------------|
| 1. Eileen Fennell (Valedictorian)   | 6. Elizabeth Kenney |
| 1. Genevieve Mallen (Valedictorian) | 7. Brittany Moore   |
| 3. Alicia Gomez (Salutatorian)      | 8. Michelle Lanier  |
| 4. Elizabeth Lott                   | 9. Kelly Mills      |
| 5. Laura Daniella Cortes            | 10. Martha Batruny  |

## Medals for Academic Excellence

### *Religion and English*

Juan Cocuy, Jr.

### *Math and Art*

Johanna Phillips

### *French and Social Studies*

Eileen Fennell

### *Spanish and Chorus*

Elizabeth Kenney

### *Science and Campus Ministry*

Jesse Schmitt

### *Drama*

Meghan Clancy

### *Speech*

Brooke Swilley

### *Journalism*

Brittany Cartwright

### *Computer Science*

Andrew Gentile

### *Band*

Angela Boyd

- Juan Cocuy, Jr. – National Merit Commended Scholar
- Eileen Fennell – National Merit Commended Scholar

## Some quick facts regarding our senior class of 2009

- Of the 203 graduating seniors, 100% attended colleges, universities or institutes of higher learning.
- 19 seniors graduated from our fully authorized International Baccalaureate program. 100% of these students received the prestigious IB Diploma.
- Over 100 Advanced Placement tests were administered to juniors and seniors.
- Over 1,100 applications were sent to colleges and universities throughout the United States, Canada and the Philippines.
- The Class of 2009 was offered more than \$5,000,000 in scholarship money, with nearly \$1,300,000 of that amount designated for International Baccalaureate graduates.
- 126 students in the Class of 2009 received Florida Bright Futures Scholarships.

## *Admissions and Financial Aid*

Since its inception in 1961, Cardinal Newman High School has nurtured the youth of Palm Beach County to become leaders in government, industry, medicine and finance. It also reinforces strong religious, moral and family values in its students that come to guide their lives long after graduation.

The activities of the Admissions Office aim to promote a positive, accurate and enthusiastic representation of Cardinal Newman High School to prospective families in as many different ways as possible. Through open house, publications, campus visits and the web site, the excitement and spirituality of our school is conveyed to prospect families.

In the fall of 2008, Cardinal Newman High School welcomed 175 new freshmen, and 17 new sophomores and juniors. The 192 new students matriculated to Cardinal Newman from 38 local schools as well as schools in the Southeastern United States and as far as China.

In an effort to assist families in meeting financial obligations incurred while attending Cardinal Newman High School, both scholarships and financial assistance are available. Participating Catholics whose parish verifies a family's involvement are given a tuition credit of \$1,100, reducing the 2008-2009 tuition to \$8,250. This aid helps to attract and retain the caliber of student that makes Cardinal Newman High School a leading institution which educates students who become National Merit Scholars, varsity athletes, award-winning leaders and International Baccalaureate Diploma earners.



# Annual Scholarships 2008-2009

**We are extremely grateful for the financial aid provided to our students from these generous donors:**

Louis V. Gerstner, Jr. Distinguished Scholars Program	\$ 36,000
William H. Pitt Foundation	25,000
Milrose Athletic Association	18,000
Sanchez De Ortigosa y Martin Fund	15,136
St. Edward's Catholic Church, Palm Beach	12,000
Annual Crusader Golf Classic	11,000
Andrew Dicembrino, Class of 2000, Memorial Scholarship	10,775
Frankino Foundation – Helping Hands Scholarships	10,500
Arsenault Family Scholarship	10,000
Lumen Christi Scholarships – Diocese of Palm Beach	8,000
Peter F. McCann, Class of 1987, Memorial Scholarship	8,000
Skaff Scholarships	8,000
Chris Brooks, Class of 1985, Memorial Scholarship	7,300
Eleanor Reeves Foundation	5,000
John Rahon, Class of 1989, Memorial Scholarship	5,000
Josephine Burke Charitable Trust	5,000
St. John Francis Scholarship	5,000
Bingo Magic Scholarship Fund	3,800
Italian Lawyers Scholarship Fund – William J. Bosso, Sr. Legal Studies Scholarship	3,000
Jalbert Charitable Trust	2,500
Total	<u>\$199,011</u>

## **Total Financial Aid Provided**

\$ 367,956	–	Financial Aid from Operating Budget
\$ 199,011	–	Scholarships Available
\$ 566,967	–	Total Aid Provided*

\*Please note the actual aid requested was significantly higher than the total aid provided. Cardinal Newman strives to accommodate as many families as possible each school year.

# Activities

Cardinal Newman High School provides students with additional opportunities for learning through participation in more than 25 extracurricular clubs and activities as well as in a range of musical performance ensembles and one drama production per year. We believe that when students take advantage of these extracurricular opportunities they become more well-rounded leaders. While most of these are funded through tuition and fees, the clubs and fine arts department also depend on philanthropic support to ensure continuation of their activities. As important as it is for our students to participate we also look each year for parent and family participation through financial gifts and donations of time and talent. With your support, we look forward to another successful year of activities for our students.

In the past year we have had many noteworthy student achievements:

- Key Club: Top Key Club among all high schools in Florida
- Outstanding Key Club president in Florida:
  - Sam Morales, Class of 2009
- Gold Congressional Awards for exemplary personal development and community service:
  - Angela Boyd, Class of 2009
  - Addison Craig, Class of 2009
  - Elizabeth Lott, Class of 2009
- Selected to American Legion Boys' State:
  - Stephen Gonzalez, Class of 2010
  - Shane Fisher, Class of 2010.
- Selected to American Legion Girls' State:
  - Lauren Dobry, Class of 2010
- Crusader Band received first place awards at the Festival of the Americas, 2009 competition in Williamsburg, Virginia for:
  - Dance Team
  - Wind Ensemble
  - Percussion Ensemble
  - Jazz Ensemble, Andrew Gentile, Class of 2009, Outstanding Soloist
- Student Government Association ranked # 3 out of 88 schools in the State of Florida
- Accolade Yearbook Staff: 2009 Walsworth Gallery of Excellence for Cover Artwork
- Pathfinder Award for Youth in Philanthropy:
  - Sam Morales, Class of 2009.



*“Clubs are an outlet for many students to express talents beyond the classroom, explore possibilities, and give back to our community.”*

Lindsay Tercilla, Class of 2009



## *Athletics*

During the 2008-2009 school year, Crusader Athletics saw tremendous student participation, as our student-athletes continued in Cardinal Newman's tradition of athletic excellence. The year was filled with numerous achievements and wonderful opportunities for every participant to experience personal growth.

Among the notable successes were the well-earned trips to the state finals by members of both our girls' and boys' Tennis teams, and a second place finish at the state championships by our boys' Golf team. Also notable, was our girls' Basketball team who finished 27-2, advancing to the regional finals, and our Softball team who also advanced to their regional finals, finishing the season with a tremendous 22-5 record.

Current and former Crusaders were featured on the sports pages of local and national newspapers not only as interscholastic standouts, but also as a NCAA track champion (Jacoby Ford '05), NFL veterans (John Carney '83 and Abe Elam '00), and an Olympic athlete (Laura Reback Bennett '93).

The most highly recognized Cardinal Newman student-athlete during the 2008-2009 school year was Brendan Gibbons, a member of the Football team. Brendan was an All-American who participated in the US Army All-American Bowl after having signed as a place-kicker at the University of Michigan.

As a founding member of the Palm Beach County Athletic Conference, Cardinal Newman is the only non-public school affiliate. This conference provides opportunities for our student-athletes to shine in competition against some of the very best high school athletes in Palm Beach County and beyond.

The enthusiasm and momentum seen throughout the Cardinal Newman community during this past year has been tremendous. During this time, the Cardinal Newman community has seen many changes. One recent change has been the formation of the Varsity Club, a parent support organization which will help to coordinate fund-raising and volunteer efforts associated with each of our sports programs. We have had changes within our coaching staff, as a number of talented, energized coaches began their work with our teams. The most high profile of these newly appointed coaches is Head Football Coach, former University of Miami star quarterback, Steve Walsh. Coach Walsh led the Hurricanes to a national championship in 1987 and went on to play in the NFL for 11 seasons.

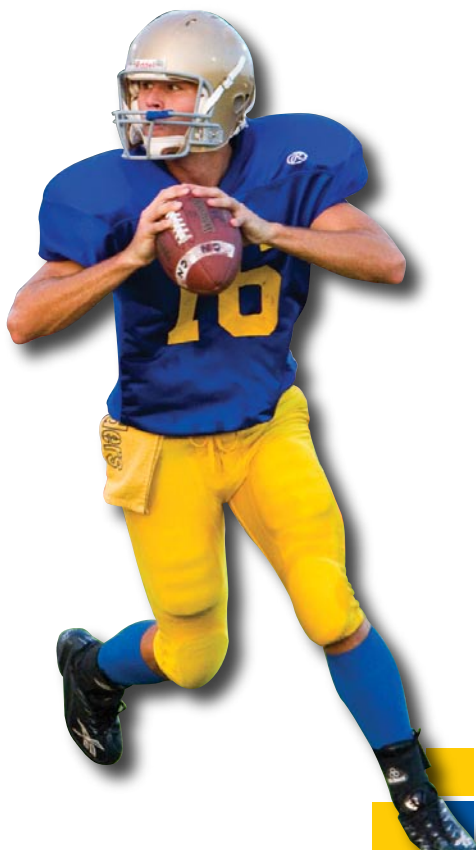
The athletic facilities have also undergone a transformation. Completed over the summer months, the Raich Building was renovated to include a new weight room, varsity locker room, and wrestling room. This project would not have been possible without the many supporters of Cardinal Newman High School. We thank you!



## Athletics

Cardinal Newman currently offers the following sports programs at the varsity and junior varsity levels:

- Baseball (*boys*)
- Basketball (*boys and girls*)
- Bowling (*boys and girls*)
- Cheerleading (*girls*)
- Cross Country (*boys and girls*)
- Football (*boys*)
- Golf (*boys and girls*)
- Lacrosse (*boys and girls*)
- Soccer (*boys and girls*)
- Softball (*girls*)
- Swimming (*boys and girls*)
- Track (*boys and girls*)
- Volleyball (*girls*)
- Wrestling (*boys*)



# Cardinal Newman Financial Report

## July 1, 2008 – June 30, 2009

### Revenues

Tuition and Fees	\$ 7,611,659
School Activities	548,875
Fundraising Activities	657,816
Miscellaneous Income	149,711

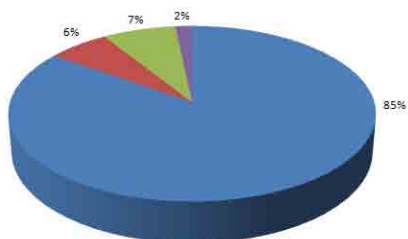
**Total** \$8,968,061

### Expenses

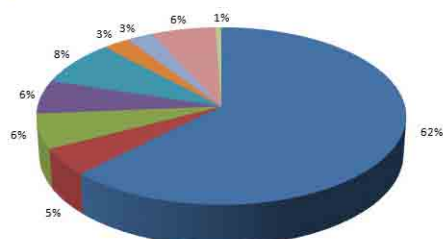
Salaries and Benefits	\$5,591,512
General and Administrative	438,963
Financial Aid	566,967
Instructional Supplies and Support	549,761
Maintenance and Utilities	731,340
School Activities	231,180
Fundraising Activities	251,144
Taxes and Insurance	560,542
Miscellaneous Expenses	49,652

**Total** \$8,968,061

Revenues



Expenses



# *Ways to Give*

For nearly 50 years, Cardinal Newman High School has greatly depended on the generosity of alumni, parents and friends. We rely on the Newman family to help bridge the gap between tuition and the actual cost of educating each student. There are a number of ways for you to support Cardinal Newman High School. Our donors tell us that making a difference in the lives of students is the greatest benefit of giving.

## *Annual Gifts*

Including Cardinal Newman as a recipient for your annual charitable contributions ensures that each and every student will receive an exceptional Catholic education. Gifts to the Annual Fund, support of Newman Night and our Alumni Golf Tournament among other activities support our needs on an ongoing basis.

## *Planned Gifts*

A gift through your estate can provide significant support to Cardinal Newman. Estate provisions often make possible gifts that otherwise could not have been made during one's lifetime. Planned gifts can be made through bequests with provisions in a will or trust, gifts of appreciated securities, bonds, mutual funds, real estate, or other planned giving vehicles.

## *Memorial Gifts*

Memorial gifts to Cardinal Newman are a thoughtful way to mark the passing of a colleague, classmate, friend, or relative.

## *Special Tributes*

A gift in honor of someone gives you a meaningful opportunity to recognize a birthday, wedding, anniversary, retirement or professional achievement.

## *Matching Gifts*

Many employers will match a gift to Cardinal Newman made by an employee, spouse of an employee, or retiree. Check with your employer to see if they are a matching gift company and enclose their matching gift form with your donation.

## *In Kind Donations*

Gifts of goods and services are an invaluable way to give back to Cardinal Newman. These contributions include donations of food or beverages for fundraisers, auction items, office equipment, and an array of professional services such as legal aid, graphic design or printing. In most cases, these gifts are tax-deductible.

For more information on how to support Cardinal Newman High School, please contact the Office of Institutional Advancement at (561) 683-6266.

## Thanks and Recognition

We would like to recognize each of you who helped advance the Catholic values and mission of Cardinal Newman through your philanthropic gifts. In addition, we offer our deepest gratitude to each of you for your dedication of time and service to Cardinal Newman. Your gifts sustain us and ensure that Cardinal Newman will continue to inspire the young men and women of our school and our community. We look forward to your continued support as we strive to continue the excellence at Cardinal Newman High School.

### Gift Levels

President's Circle	\$25,000 – or more	Newman Society	\$1,000 – \$2,499
Platinum Crusader	\$10,000 – \$24,999	Newman Sponsor	\$500 – \$999
Gold Crusader	\$5,000 – \$9,999	Newman Patron	\$250 – \$499
Silver Crusader	\$2,500 – \$4,999	Newman Crusader	up to \$249

### Our Donors

#### President's Circle \$25,000 +

Mr. and Mrs. Robert Garvy  
Mr. and Mrs. Jay F. Higgins  
Frank J. Lewis Foundation  
Mr. and Mrs. Paul VanderGrift

#### Platinum Crusader \$10,000 – \$24,999

Dr. and Mrs. Roberto J. Acosta, Jr.  
Mr. and Mrs. Gerard A. Arsenault  
Dr. and Mrs. Richard Lazzara  
Mr. and Mrs. Brian M. O'Connell  
Mr. and Mrs. Bruce A. Zimet  
Anonymous

#### Gold Crusader \$5,000 – \$9,999

Anderson-Moore Construction  
Ms. Vicky Bidwell  
Mr. and Mrs. David A. Burke  
Mr. and Mrs. Alan Burnette  
Mr. and Mrs. Frank S. Coniglio  
Mr. and Mrs. Robert Reveley  
Mr. and Mrs. Angelo P. Schiralli  
Mr. Steven J. Walsh

#### Silver Crusader \$2,500 – \$4,999

Mr. and Mrs. Michael Agnello  
Mr. and Mrs. Thomas Carney, Jr.  
Mr. and Mrs. Christopher David  
Mrs. Raysa Fanjul-Herrera

Mr. and Mrs. T. Jack Gary, III  
Hulett Environmental Service  
Grand Bank & Trust of Florida  
Mr. and Mrs. Charles C. Isiminger, Sr.  
Mr. and Mrs. Eugene F. Merkert  
Mr. and Mrs. Lawrence Colin Rafferty  
Rendina Companies  
Mr. and Mrs. John T. Rupp  
Mr. and Mrs. Lee Schefer  
Mr. and Mrs. Brian G. Stenz  
Mr. and Mrs. Anthony Wood

#### Newman Society \$1,000 – \$2,499

Alliance Bernstein  
Architecture Metals  
B/E Aerospace  
Mr. and Mrs. Alan Botkin  
Mr. and Mrs. William J. Bosso, III  
Mr. and Mrs. Kevan K. Boyles  
Mr. and Mrs. Harry D. Bush  
Mr. and Mrs. Michael J. Chren  
Dr. and Mrs. Timothy G. Coffield  
Dr. and Mrs. James Clancy  
Mr. and Mrs. Joseph A. D'Amelio  
Mr. and Mrs. Enrico Dicembrino  
Mr. and Mrs. Martin A. Dytrych  
Eleanor Jennings Myatt Memorial  
Foundation  
Mr. and Mrs. Neil Elliott  
E.R. Bradley's Saloon  
Mr. and Mrs. Kenneth Farino

Flagler Realty & Development  
Ms. Shiela Germain  
Glickman, Witters, & Marell, P.A.  
Godfrey Electric, Inc.  
Mr. and Mrs. Jamie Gonzalez  
Graduate-Surgical, Dr. Daniel Higgins  
Mr. and Mrs. Timothy J. Graves  
Mr. and Mrs. Robert Gugino  
Mr. and Mrs. Kerry J. Haigh  
Mr. and Mrs. Gary Iscoe  
Mr. and Mrs. Gabriel Isasi, IV  
Jack Scalisi Wholesale Fruit & Produce  
Jerome A. Yavitz Charitable Foundation  
Jeri M. Blaney, P.A.  
Mr. and Mrs. Dan Jones  
Mr. and Mrs. Donald Fountain, Jr.  
Mr. and Mrs. Donill Kenney  
Mr. Edward L. McGann  
Dr. and Mrs. Victor M. Molina  
Mr. and Mrs. John Murphy  
Mr. and Mrs. Mark D. Nosacka  
Mr. and Mrs. Thomas J. O'Hara  
Mr. and Mrs. William Osborne  
Maurice Maison  
Mr. and Mrs. Joseph F. Partyka  
Dr. and Mrs. Ronald Porter  
Quattlebaum Funeral and Cremation  
Mr. and Mrs. Gregory M. Quattlebaum  
Dr. and Dr. Bassam Sayegh  
St. Ann Catholic Church  
Schutz & White, LLP  
Mr. and Mrs. Paul C. Schwarzkopf  
Mr. and Mrs. J. John Simone  
St. Jude Catholic Church  
St. Rita Parish  
Mr. and Mrs. Christopher K. Swindle  
Mr. and Mrs. Rock A. Tate  
Tenet Healthcare Foundation  
Mr. and Mrs. Alan Tucker  
Ms. Melissa Tyner  
Mr. and Mrs. Milford Walker  
Mr. and Mrs. Peter A. Wolfe  
Anonymous

**Newman Sponsor \$500 – \$999**

Mr. and Mrs. William S. Allen  
Mr. and Mrs. William G. Capko  
Mr. and Mrs. Bryan Chase  
Mr. and Mrs. Juan C. Cocuy  
Brian B. Joslyn, P.A.  
Burman, Critton, Luttier & Coleman  
Mr. and Mrs. Timothy L. Day  
Mrs. Karen Donnelly  
Mr. and Mrs. Dennis Dorsey

Mr. and Mrs. William J. Egan, Jr.  
Mr. and Mrs. Francis L. Fraenkel  
Mr. and Mrs. Francis Geary  
Mr. and Mrs. Joe Gephart  
Mr. and Mrs. Christopher Grant  
Mr. and Mrs. Mark Hanlon  
Dr. and Mrs. Daniel R. Higgins  
Mr. and Mrs. Edmund D. Holland  
Ms. Patricia Lester Kent  
Lamm, Krielow, Dytrych & Co.  
Marsh Mercer Kroll  
Matthew S. Nugent, Attorney at Law  
Medical Specialists of the Palm Beaches  
Ms. Jennifer A. Michael  
Mr. and Mrs. Anthony Marino, Jr.  
Mrs. Maureen Martin  
Mr. and Mrs. John P. Rich  
Mr. and Mrs. Michael Schiffman  
Mr. and Mrs. David H. Scaff  
Mr. and Mrs. David D. Skantar  
Southern Waste Systems  
State Farm - William Hagan  
Mr. and Mrs. Michael Szybinski  
Trust F/B/O Nicholas Rupp &  
Mallory Mills  
Anonymous

**Newman Patron \$250 – \$499**

Absolute Sewer & Drain Cleaning  
Mrs. Patricia Alvarez  
Bonded Lightning  
Bosso, Bosso & Pardo, P.A. Attorneys  
Bush Brothers Provisions Co.  
C.A.B. Restaurant Concepts, LLC  
Clyatt & Richardson  
Knights of Columbus, St. Peter Parish  
Mr. and Mrs. Jim Andersen  
Mrs. Jane Daley-Anderson  
Mr. and Mrs. Jim Arrigo  
Mr. and Mrs. James Bickel  
Mr. Mark Bidwell  
Mr. and Mrs. Roman A. Bninski  
Mr. and Mrs. Vincent A. Bogdanski  
Mr. and Mrs. James Boger  
Mr. and Mrs. John Bollero  
Mr. and Mrs. Mike Brill  
Mr. and Mrs. Gordon Brochard  
Mr. and Mrs. Samuel F. Budnyk  
Mr. and Mrs. Mark W. Clark  
Mrs. Linda Collella  
Ms. Kerry Colvett  
Mr. Andrew James Cox  
Mr. and Mrs. Steve Craig  
Mr. and Mrs. James Cruikshank

Mr. and Mrs. Sean Cunningham  
Mr. and Mrs. Richard C. Daniels  
Mr. and Mrs. Dennis Davis  
Mr. Alexander M. Diaz  
Mr. Michael J. Dillon  
Ms. Karen D. Donnelly  
Mr. and Mrs. Dennis Dorsey  
Mr. and Mr. David C. Dulman  
Mr. Jack Ennis  
Dr. and Mrs. Todd E. Erickson  
Mr. and Mrs. Tom Ewer  
Mr. and Mrs. William Fenton  
Mr. and Mrs. Alfred E. Ferris  
Mrs. Kathleen Emmett Filosa  
Mr. and Mrs. Timothy Finck  
Mr. and Mrs. John Fiorentino  
Mr. and Mrs. Dennis J. Flanagan  
Mr. and Mrs. Dan Fountain  
Ms. Theresa Fretterd  
Mr. and Mrs. Ron Frye  
Mr. and Mrs. Francis B. Geary, Jr.  
Mr. and Mrs. Mike Gfesser  
Mr. and Mrs. Timothy Givens  
Glickman, Wtters, & Marell, P.A.  
Mr. and Mrs. Pedro F. Gomez  
Mrs. Marcia Gustafson  
H & J Contracting, Inc.  
Mr. and Mrs. William L. Hagan  
Mr. and Mrs. Scott Hanson  
Mr. and Mrs. Philip Harding  
Mr. and Mrs. Peter F. Hayden  
Mr. and Mrs. Dennis Hernandez  
Mr. and Mrs. Raymond Holland  
Mr. and Mrs. Winston Hutchinson  
J.A. Adams, Inc  
James C. Gavigan, P.A..  
Mr. and Mrs. Richard S. Johnson, Jr.  
Mr. and Mrs. Edward F. King, III  
Kiwanis Club of West Palm Beach  
Law Offices of Eddie Stephens  
Lytal, Reiter, Clark, Fountain  
and Williams  
Mr. and Mrs. George Mastics, Jr.  
Mr. and Mrs. Dennis J. Kanai  
Mr. and Mrs. Stefan S. Katz  
Mr. and Mrs. Richard N. Kleisley  
Law Offices of Kevan Boyles, P.A.  
Mr. and Mrs. Daniel P. Lewis  
Ms. Diana Lewis  
Mr. and Mrs. Paul Marro  
Ms. Maureen Martin  
Mr. George Mastics  
Mrs. Kathleen Mastracchio

Mr. and Mrs. Robert McCormick  
Mr. and Mrs. James McGann  
Mr. and Mrs. Joseph W. McLeary  
Mr. and Mrs. Bryan G. Megrath  
Mr. Larry M. Mesches  
Mr. and Mrs. David Michael  
Mr. and Mrs. Al Michaels  
Mr. and Mrs. Jon Moore  
Money Concepts  
Dr. and Mrs. Ivo Moraguez  
Mr. Francisco J. Morales  
Mr. and Mrs. Luis T. Muniz  
Murphy Construction  
Murphy's Paint and Body Shop  
Mr. and Mrs. Paul A. Nugent  
Northwood Sports Medicine and Physical  
Therapy  
Mrs. Phyllis Nolin  
Mr. Dennis Noonan  
Ms. Katherine O'Neill  
Mr. and Mrs. Richard R. Osborn  
Mr. and Mrs. William Osborne  
O'Hara Landscape & Maintenance  
Palm Beach Kennel Club  
Palm Beach Physicians Group  
Palm Beach Yacht Club Associates  
Ms. Joan Partyka  
Perlet & Shiner, P.A.  
Mr. and Mrs. John E. Phillips, III  
Premier Auto Sales, LLC  
Premier Rollout Awnings  
Pressly & Pressly, P.A.  
Prime Autos  
Pro Lawn Care Plus  
Quantum Foundation Advancing  
Helping Hands  
Mrs. Phyllis A. Quattlebaum  
Mr. Gary E. Quattlebaum  
Mr. and Mrs. Nick Raich, Sr.  
Mr. and Mrs. Jeffrey S. Rano  
Rapids Water Park  
Dr. and Mrs. Robert S. Raymond  
Mr. and Mrs. Richard M. Rendina  
Mr. and Mrs. John P. Rich, Sr.  
Mr. and Mrs. Kevin Richardson  
Mr. and Mrs. Wade Riley  
Mr. and Mrs. Chad F. Romano  
Royal Palm Dental Associates, Inc.  
Mr. and Mrs. Francis Russell  
Dr. and Mrs. Carlos W. Sanchez  
Mr. and Mrs. Bruce S. Schmitt  
Mr. and Mrs. Robert Scialla, Jr.  
Security Networks  
Mr. and Mrs. James Seelinger

Mr. and Mrs. David M. Shockley  
Dr. and Mrs. Kenneth Simmons  
Simmons Veterinary Hospital  
Mr. and Mrs. Daniel A. Slotkin  
Mr. Richard Slawson  
Mr. and Mrs. Larry Smith  
Smith Engineering Consultants, Inc.  
Sorgini & Sorgini, P.A.  
Mrs. Lydia K. Sorgini  
South Florida Janitorial & Pool Supply  
Spinal Health Performance Inc.  
Starr, DDS., P.A.  
St. Ann Catholic School  
St. Clare Parish  
St. Juliana Catholic Church  
St. Paul of the Cross Catholic Church  
Serra Club of Palm Beach County  
Serraes Construction General Contractors  
Mr. and Mrs. Martin Stefanelli  
Mr. and Mrs. William M. Street  
Mr. and Mrs. Scott Stocking  
Surcon Investment  
Mr. and Mrs. Stephen Swank  
Mr. and Mrs. Timothy Swilley  
Mrs. Donna Sypniewski  
The Trademark Company, PLLC  
Mr. and Mrs. Norman H. Thomas  
Mr. Thomas L. Twyford, Jr.  
Tylanders Hurricane Office Supply  
Mr. George E. Underwood  
Unlimited Air Conditioning, Inc.  
USB-PB Wealth Management Group  
Brian Kleisley  
Dr. and Mr. Manuel Vinas  
Ms. Penelope Mary Williams-Vivian  
Mr. and Mrs. David Wallace  
Mr. Daniel P. Walsh  
William E. Johnson, P.A.  
Mr. and Mrs. Clell C. Warriner, III  
West Palm Beach Fishing Club  
Mr. and Mrs. Curtis Witters  
Mr. Christopher P. Witters  
Anonymous

### **Newman Crusader Up to \$249**

A+ Virtual Assistant, Inc.  
Accessoreyes Optical  
Mr. and Mrs. Robert Acosta  
Mr. and Mrs. John Ahrenholz  
Mr. and Mrs. Thomas J. Ali  
Mr. and Mrs. John C. Allen  
Mrs. Angela Wing-Allen  
Mr. David B. Anderson  
Amici Ristorante & Bar

Mr. and Mrs. Robert E. Arrue  
Mr. and Mrs. William R. Arsenault  
Atlantis Country Club & Inn  
Audrey B. Callebout Rev. Tst.  
Mr. and Mrs. Ricardo J. Ayala  
Mr. Jesse J. Azqueta  
Mr. and Mrs. Jesus Azqueta  
Mr. and Mrs. Kenneth Bailey  
Sister Anne Richard Baker  
Baker Veterinary Clinics  
Banzai Blitz, Inc.  
Mr. and Mrs. Timothy J. Barbusio  
Mr. Robert L. Baricevich  
Mr. Charles D. Barnett  
Barrier Technologies  
Mr. and Mrs. Christopher P. Barry  
Mrs. Susan P. Bartholomew  
Ms. C. Lisa K. Bateman  
Mr. and Mrs. Michael A. Bell  
Mrs. Diana Bell  
Dr. and Mrs. Albert Benvenuto  
Mr. and Mrs. Stephen Berg  
Mr. and Mrs. Robert E. Biehl  
Ms. Jean Block  
Mr. and Mrs. William Bninski  
Mr. and Mrs. Paul Boerstler  
Mr. and Mrs. M. Robert Bosso  
Mr. and Mrs. William J. Bosso, Jr.  
Ms. Karen Bottcher  
Boyes and Farina, P.A.  
Mr. Charles Bowden  
Ms. Rosemary M. Bramuchi  
Miss Katherine E. Brattebo  
Bravo KB, Inc.  
Mr. Andrew E. Browley  
Brian B. Joslyn, P.A.  
Mr. Peter S. Broberg  
Ms. Carla S. Bryant  
Mr. and Mrs. William Buckland  
Mr. and Mrs. Samuel F. Budnyk  
Mr. Vincent L. Burkhardt  
Burnett Associates  
Mr. Andrew Bytner  
Ms. Yvonne Cabrera  
Mr. and Mrs. Daniel T. Canavan  
Mrs. Graziella N. Cannuscio  
Rev. David W. Carr  
Mr. and Mrs. William Carr  
Ms. Leticia Cassasnovas  
Mr. and Mrs. Joseph Cerbone  
Mr. Stanley Chai  
Mr. and Mrs. Ronald C. Charbonneau  
Mr. and Mrs. Leonard T. Chiocca  
Mr. and Mrs. Marc Ciminello

*(Newman Crusader continued)*

Citation Communications, Inc.  
Mr. and Mrs. Dale Closi  
Coco Palm Beach LLC  
Mr. Hank McCall  
Mr. and Mrs. Christopher Cornett  
Ms. Colleen M. Courtney  
Ms. Susan R. Cox  
Mrs. Ana D'Emilio  
Dailey, Janssen Architects, P.A.  
Mr. and Mrs. James Dann  
D'Alessandro & Sons, Inc.  
Datura Auto Sales and Rentals  
Donald Freeman, P.A.  
Mr. and Mrs. Dennis Davis  
Mrs. Linda Becker-Dean  
Mr. and Mrs. Walter Deck  
Mr. Frank A. DeFilippo  
Mr. and Mrs. Anthony DeFilippo  
Dr. Frank DeLucia  
Mrs. Margaret Donnelley  
Mr. Daniel Downey  
Downey & Downey, P.A.  
Drake School of Irish Dance  
Mr. David M Eberhart, Jr.  
Eileen's Travel  
Mr. and Mrs. Ed Eiskey  
Eriksen Lawn Firm  
Dr. and Mrs. Neil E. Erickson  
Mr. and Mrs. William T. Evans  
Eyecare Professionals  
F. Martin Perry, P.A.  
Frank A. Kreidler, Attorney  
French & Turdo, P.A.  
Ms. Michelle M. Faivre  
Ms. Iliana Falero  
Mrs. and Mr. Laura B. Fedor  
Mr. and Mrs. Bryan J. Fennell  
Mr. Rodolfo Fernandez  
Mr. and Mrs. Dennis J. Flanagan  
Ms. Dorla L. Fleming  
Florida Hand Rehabilitation, Inc.  
Folding Shutter Corporation  
Mr. Patrick G. Foran, USCG  
Mr. and Mrs. Donal K. Ford  
Donald Freeman, P.A.  
G.S. Fiberlite, Inc.  
Mrs. Michelle Gabriel  
Mr. and Mrs. Robert G. Gallo  
Ms. Linda Gannon  
Mr. and Mrs. James M. Gannon  
Mr. and Mrs. Robert Gannon

Mr. and Mrs. Jefferson Gardner  
Mr. and Mrs. John Gauvey  
Geary & Payne, P.A.  
Mr. and Mrs. Vance L. German  
Mrs. Marlene Kiriazis-Gerson  
Mr. and Mrs. Shawn Gibbons  
Mr. and Mrs. Herbert Gibson  
Mr. Anthony R. Girodo  
Dr. Joseph A. Della-Giustina  
Mr. and Mrs. Alex Glebocki  
Mr. Gary A. Golia  
Mr. and Mrs. Peter Gomez  
Ms. Marikay E. Gomez  
Mr. Andrew L. Gomez  
Dr. Jorge E. Gonzalez, M.D.  
Mr. Mauricio Gordon  
Ms. Natasha T. Gouvias  
Grall, Glenn & Grall  
Mr. and Mrs. Michael Green  
Mr. and Mrs. Charles Green  
Greenacres Assisted Services, Inc.  
Mrs. Sylvia C. Gregory  
Mrs. Elizabeth Groth  
Mr. and Mrs. Gabriel S. Gusman  
Mr. and Mrs. Mark T. Hanlon  
Mr. and Mrs. Rome J. Hartman  
Mr. and Mrs. Travis M. Heater  
Ms. Mary Hemstreet  
Mr. and Mrs. Brent A. Henderson  
Dr. James Henry  
Mr. and Mrs. Byard D. Hey, Jr.  
Mr. John Hoffman  
Mr. and Mrs. Mark A. Hoffman  
Ms. Lisa Hogan  
Holy Name of Jesus Catholic Church  
Holyfield & Thomas, LLC  
Mr. and Mrs. Oliver C. Holmes, Jr.  
Mr. and Mrs. Peter Holton  
Mr. and Mrs. Robert Horton  
Mrs. Christina (Gomez) Howell  
Mr. Paul Frank Hundley  
Susan K. Gauvey, J.D.  
JLA Geosciences, Inc.  
Jack Sheehan Cleaners  
Juanita R. Bush, Trustee  
Mr. Dwayne Jackson  
Dr. and Mrs. Gerard Jean-Baptiste  
Mr. and Mrs. James Johnson  
Mr. and Mrs. Andrew Johnston  
Mr. and Mrs. Richard Jones  
Mr. and Mrs. Terry Allen Jones  
Mr. and Mrs. George C. Joy, III  
Mr. John J. Flynn, Jr.  
Mr. and Mrs. Robert M. Golson, Jr.

*(Newman Crusader continued)*

Mr. and Mrs. Anthony R. Guaglione, Jr.  
Mr. and Mrs. Edmund D. Holland, Jr.  
Mr. and Mrs. Timothy Hulihan  
Isiminger & Stubbs Engineering, Inc.  
J.F. Racket Stringing  
Mr. and Mrs. Michael R. Karosas  
Ms. Edwina Kempf  
Dr. and Mrs. Sebastian Kent  
Kentucky Fried Chicken  
Mr. and Mrs. William J. Klein  
Mr. and Mrs. Brian H. Kleisley  
Knights of Columbus #4999  
Kruesler-Walsh, Compiani & Vargas  
Mr. Zan Kugler  
Ms. Coleen LaCosta  
Mrs. Ruth F. Lampman  
Mr. Terrel Lavergne  
Law Offices of David M. Piccolo, P.A.  
Law Offices of Eddie Stephens  
Mr. and Mrs. Maurice Lecker  
Ms. Linda Lee  
Ms. Mary Lewis  
Mr. and Mrs. Donald Linkous  
Mr. and Mrs. Steven R. Linn  
Mr. and Mrs. David A. Logan  
Mr. and Mrs. George Lott  
Lourdes Nieves, M.D., P.A.  
Mr. Michael G. Lally and  
    Ms. Theresa LePore  
Lydian Bank & Trust  
Mr. and Mrs. Lake H. Lytal  
Denise M. Davis, M.D.  
Mr. and Mrs. Robb R. Maass  
Mr. Douglas H. MacLaughlin  
Mr. and Mrs. Carmen Magana  
Mr. and Mrs. Samuel Mallamo  
Mr. and Mrs. Steven Malone  
Marciano Family Optometric  
Mr. and Mrs. Brian Marro  
Mr. and Mrs. Jerry Martens  
Dr. and Mrs. Richard S. Masella  
Mrs. Irma W. McCall  
McCall's Carpet Service  
Mr. and Mrs. Malcolm G. McCampbell  
Mrs. Madonna McClain  
Mr. and Mrs. Gregory McDonough  
Ms. Madonna J. McFadden  
Mr. Charles E. McGinness  
Mr. and Mrs. Michael McGrath  
Mr. and Mrs. David McIntosh  
Mr. and Mrs. John McKenna  
Mr. and Mrs. Jeffrey McNiece

Mr. and Mrs. William Megrath  
Mr. David Melendez  
Ms. Sandra Rodriguez-Mendoza  
Mr. and Mrs. Dennis Merten  
Mr. and Mrs. Rolando Mesa  
Mr. and Mrs. Ronald Mesaros  
Mr. and Mrs. Barry Meve  
Mr. and Mrs. Stephen P. Middleton  
Mr. and Mrs. Wayne Miles  
Ms. Jeanette Miller  
Mr. Charles Miller  
Mr. and Mrs. Ted Millings  
Ms. Leslie Milton  
Mr. and Mrs. David Mintzer  
Ms. Maria Miserendino  
Mittleman Eye Center  
M & J Automotive Enterprises, Inc.  
Mr. and Mrs. Thomas J. Moffett  
Mr. and Mrs. Jeffrey Morgan  
Mr. and Mrs. Scott G. Morton  
Mr. Daniel C. Mousseau  
Mr. and Mrs. Miguel Moya  
Mr. and Mrs. Luis Alexander Muniz  
Mr. Harold Murphy  
Ms. Monet M. Murray  
Mr. and Mrs. John Brian Murray  
Mr. and Mrs. Louis Mrachek  
Neptune Research, Inc.  
Mr. Dennis M. Noonan  
Mr. Charles Nugent  
Mr. and Mrs. Matthew S. Nugent  
Mr. and Mrs. Andrew O'Brien  
Dr. and Mrs. Gerald O'Connor  
Mr. and Mrs. Thomas M. O'Hara  
Mr. and Mrs. David O'Neill  
Mr. James J. Obot  
Ms. Kathryn Oen  
Mr. Paul A. Oenbrink  
Mr. and Mrs. Allan Ortman  
Mr. John P. Orsi  
Mr. Rafael Otano  
Our Lady Queen of Peace Cemetary  
Dr. and Dr. Stephen Pacetti  
Page, Mrachek, Fitzgerald & Rose  
Palm Beach Glass Specialties, Inc.  
Palm Beach Insurance Group, Inc.  
Palm Beach Yacht Services  
Palmwood Corporation, Inc.  
Patrick C. Casey, P.A.  
Mr. and Mrs. Douglas Palmer  
Mr. and Mrs. Jeffrey Pappas  
Mr. and Mrs. Ronald Parkes  
Mr. and Mrs. William Paty  
Mr. and Mrs. Richard S. Pecorella

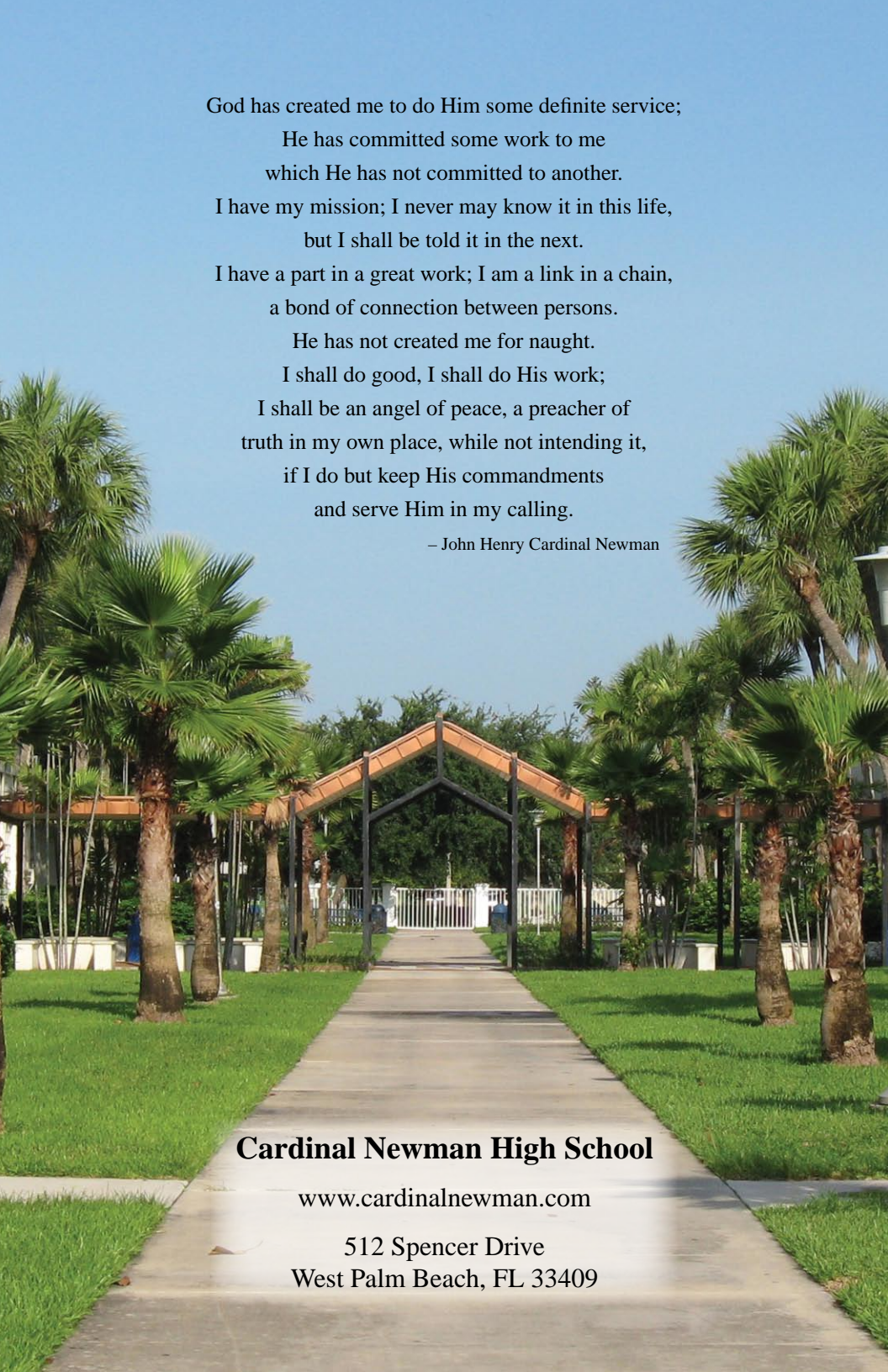
*(Newman Crusader continued)*

Ms. Judith Ann Pelio  
Mr. and Mrs. Kenneth William Perla  
Perry & Taylor, P.A.  
Dr. and Mrs. Roman Pena  
Mr. and Mrs. James Pressly  
Mr. and Mrs. Robert A. Prichard  
Quality Automotive Repair Centers  
R.P. Hamby, Inc.  
Raindancer Restaurant  
Mr. and Mrs. Michael Rafferty  
Mr. and Mrs. Michael W. Rafter  
Mr. and Mrs. Thomas Ramiccio  
Mr. Leo Rancine  
Mr. and Mrs. Thomas E. Reilly, Jr  
Mr. and Mrs. Richard Rendina  
Mr. and Mrs. Patrick T. Reppel  
Ms. Ruby Rinker  
River House Restaurant  
Riverside National Bank  
RNK & Associates, Inc.  
Roberto J. Acosta, M.D., P.A.  
Rosarian Academy  
Ross Griffin D.J. Inc.  
Mrs. Linda Ross  
Mr. Robert D. Routhier  
Mr. Larry Ruda  
Sacred Heart Catholic School  
Mr. Paul Safran  
Ms. Adela T. Sanchez  
Mr. Alexander Sanchez  
Mr. and Mrs. Juan Sarmiento  
Mr. George W. Saviolidis  
Mr. and Mrs. John Scarola  
Mr. George Schatzle  
Mr. Benedict P. Scozzaro  
Seacrest Services, Inc.  
Ms. Virginia Seaverns  
Mr. and Mrs. Michael R. Sedlak  
Mr. and Mrs. Daniel M. Shea  
Shores Animal Clinic, P.A.  
Mr. and Mrs. Joseph Simmens  
Mr. and Mrs. Geoffrey Smallwood  
Mr. and Mrs. Robert Sorgini

Mr. Carl Spear  
Mr. Francis G. Spillane  
Stonegate Bank  
St. Clare Catholic School  
St. Mark Catholic Church  
St. Ignatius Loyola Catholic Church  
Dr. and Mrs. Christopher Starr  
Mr. Joseph G. Stenz  
Ms. Susan (Staley) Stephenson  
Mrs. Barbara Sweat  
SWS Bar BQ, Inc.  
Sylvia D. Callway Living Trust  
Mr. and Mrs. Gary J. Szorosy  
Mr. and Mrs. Robert Taylor  
Tercilla Courtemanche Architects, Inc.  
Ms. Catherine Temple  
Tequesta Dental Associates, P.A  
Mr. and Mrs. Rene Tercilla  
Mr. and Mrs. John Throop  
Mr. John Toner  
Tomasello Pest Control  
Mrs. Janet Tracy  
Mrs. Irene M. Tramonte  
Ms. Susan Vettler M. Truitt  
Mr. and Mrs. Stanley Tucker  
Mr. Thomas Turchan  
Ms. Mimi G. Vail  
Mr. and Mrs. Jose Valdivia  
Verdes Tropicana  
Mr. and Mrs. George D. Walker, Jr.  
Mr. and Mrs. Denis Walsh  
Mr. and Mrs. H. Adams Weaver  
Mr. and Mrs. John Weidner  
Mr. Robert J. Whidden  
Mr. and Mrs. Thomas Whittelsey  
Mrs. Dorothy Whitaker  
Mr. and Mrs. Ernest White  
Mrs. Ana M. Wright  
Mr. and Mrs. Arthur Wroble  
Mr. and Mrs. David A. Wurster  
Mr. and Mrs. Angelo J. Yeskey  
Mr. and Mrs. James S. Yonkers, Jr.  
Mr. and Mrs. Larry Zuccala  
Anonymous

This publication lists cash gifts made between July 1, 2008 and June 30, 2009. In spite of our utmost care to be accurate, omissions sometimes occur. If you made a cash gift during the past fiscal year and your name has been omitted, misspelled or listed incorrectly, please accept our sincere apologies. Please let us know by contacting the Development Office via email at [developmentoffice@cardinalnewman.com](mailto:developmentoffice@cardinalnewman.com). Thank you.



A scenic view of a paved walkway lined with palm trees leading to a white gate at Cardinal Newman High School. The walkway is flanked by lush green grass and several tall palm trees. In the distance, a white metal gate stands at the end of the path, with a building visible behind it. The sky is clear and blue.

God has created me to do Him some definite service;  
He has committed some work to me  
which He has not committed to another.  
I have my mission; I never may know it in this life,  
but I shall be told it in the next.  
I have a part in a great work; I am a link in a chain,  
a bond of connection between persons.  
He has not created me for naught.  
I shall do good, I shall do His work;  
I shall be an angel of peace, a preacher of  
truth in my own place, while not intending it,  
if I do but keep His commandments  
and serve Him in my calling.

– John Henry Cardinal Newman

**Cardinal Newman High School**

[www.cardinalnewman.com](http://www.cardinalnewman.com)

512 Spencer Drive  
West Palm Beach, FL 33409